

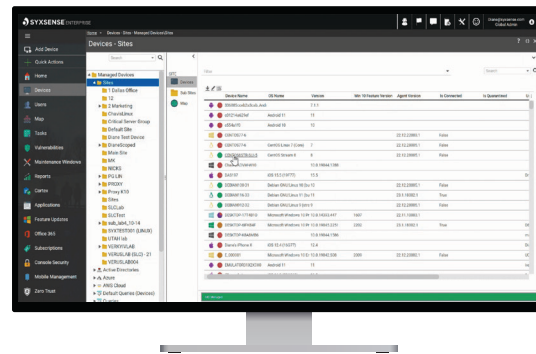
# Complete Visibility of Your IT Environment

## Syxsense Manage

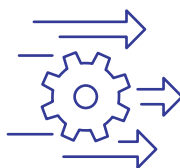
In today's IT environments, it can be tough to stay on top of the huge number of devices and applications a team is tasked with managing. System device inventory for a distributed team can be challenging enough, but deploying successful patches in a timely manner adds a level of complexity that can seem almost impossible to address.

Syxsense Manage was built with modern IT teams in mind; to streamline and unify device management in a single easy-to-use platform. Syxsense Manage delivers comprehensive device management and patch deployment of your entire IT landscape, without the need for "bolt-on" features to ensure full functionality.

By combining classic troubleshooting functions, such as remote control and software deployment, with automated IT management, Syxsense Manage is a lightweight, cloud-native platform that discovers all endpoints communicating over your network, even if they're remote, roaming, or in the cloud, and brings operating system (OS), hardware, and software details into your central console.



**Discover Network Devices**  
Find devices and manage inventory in real-time



**Deploy Security Patches**  
Detect missing OS and third-party patches and deploy updates



**Work in the Cloud**  
Manage Windows, Mac, Linux, iOS, and Android devices from the cloud

## Syxsense Manage Features

**Device Discovery and Management** Syxsense Manage is cloud native, OS agnostic and hosted in Microsoft Azure. Cross-platform support includes Windows, Mac, Linux, iOS, and Android so you can manage desktops, laptops, servers, virtual machines, and mobile devices (MDM) from one place.

**Patch Management and Deployment** Stay up to date on releases, prioritize critical patches, and target vulnerable devices with accurate detection and rapid deployment.

**Windows Upgrade "In-Place"** Because Syxsense handles Windows Feature Updates separately from other OS and third-party deployments, you can leverage your own ISOs to keep devices up to date with all supported Windows versions.

**Troubleshooting Tools** Access devices, provide assistance, and resolve issues remotely with a secure, cloud-based connection from any web browser.

**Customizable Dashboards** Customize and share discoveries and actionable insights with key stakeholders with interactive visualizations of vital IT management metrics.